

INSTALLING CREATIVE CLOUD

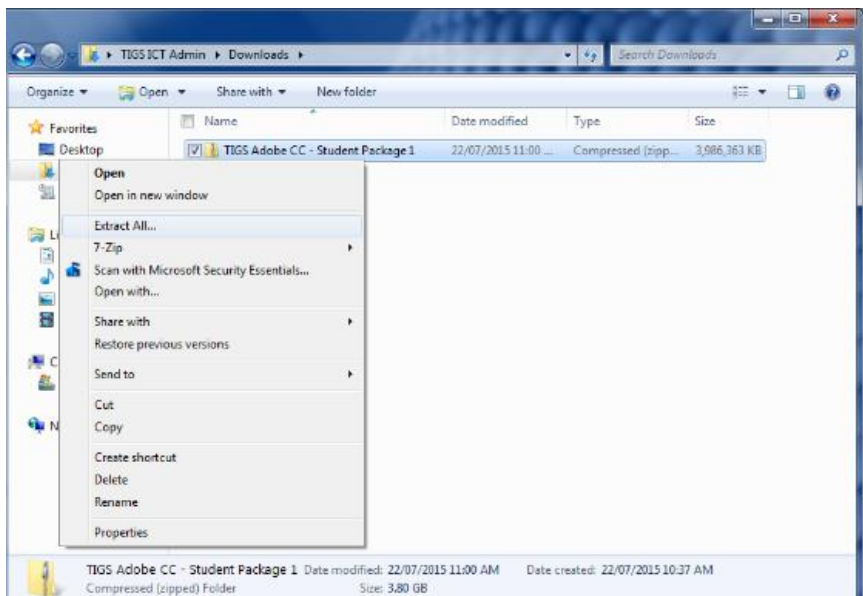
This guide will demonstrate how to install Adobe Creative Cloud.

Troubleshooting

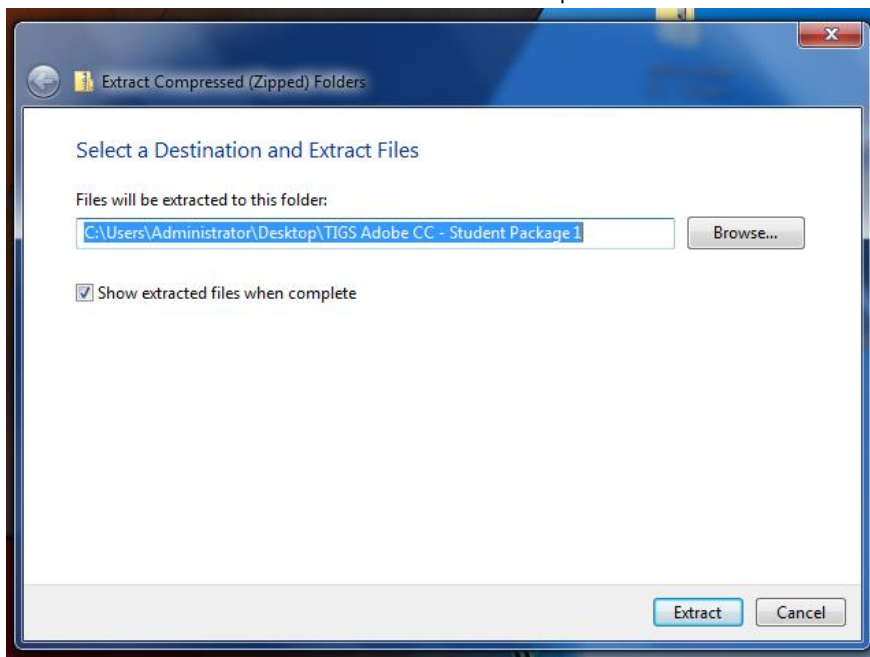
- Make sure you have enough space on your computer for the installer and the software once it is installed. You will need at least 10GB available
- If you have trouble installing, please contact the ICT Department from the Library front desk.

Microsoft Windows

- 1) Right click on the **TIGS Adobe CC – Student Package x.zip** file that you have downloaded from the TIGS Portal. Choose **Extract All**.

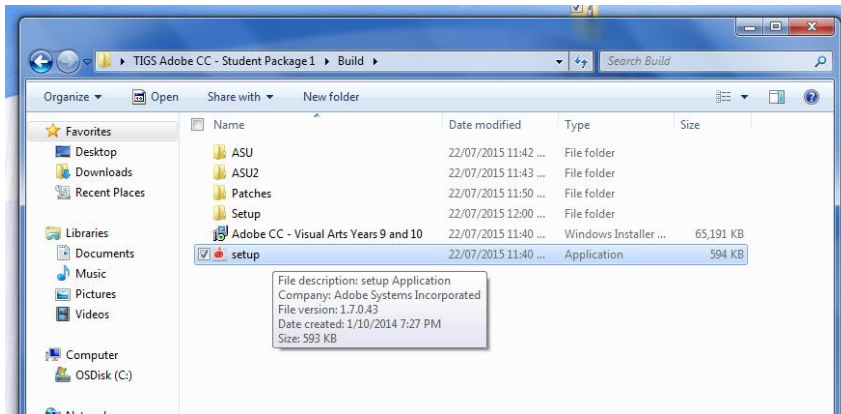


- 2) Choose **Extract** on the window that will open



INSTALLING CREATIVE CLOUD

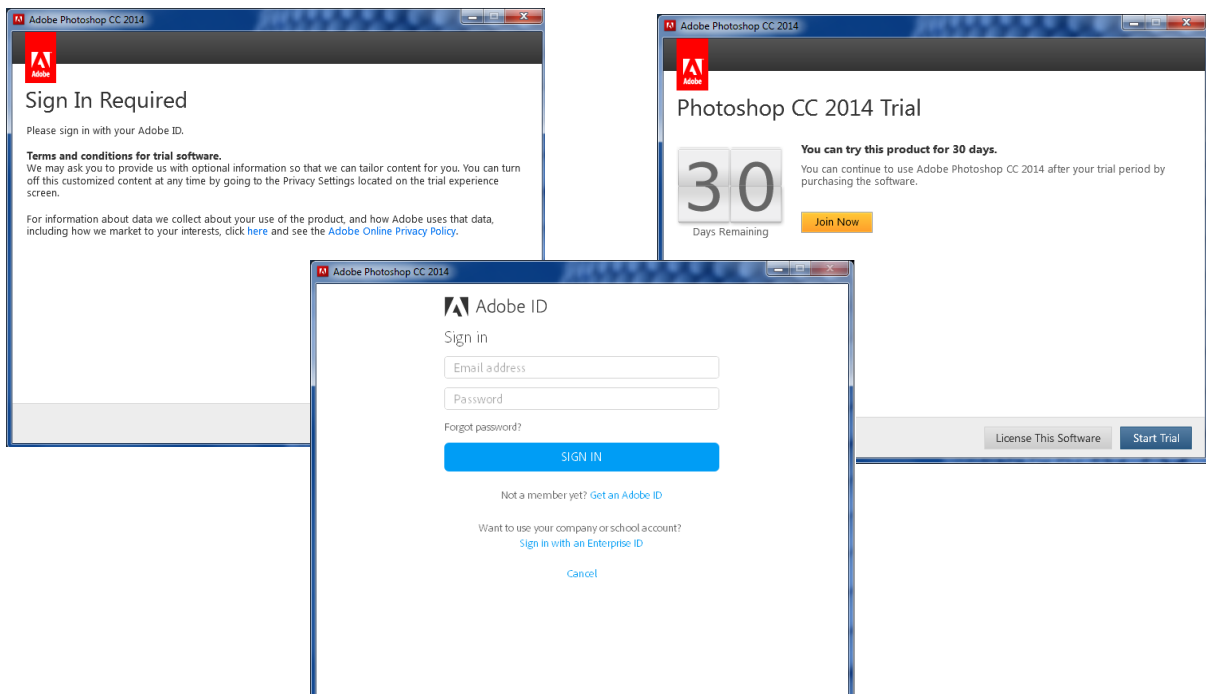
- 3) After the files have been extracted double-click on the **setup** application to install Creative Cloud.



- 4) This process can take a long time and might look like it has stalled so please be patient.

Activate

- 1) If you need to use Creative Cloud straight away you will need to sign in with an Adobe ID.
 - a. Open an Adobe CC product (e.g. Photoshop)
 - b. You will be asked to Sign in with an Adobe ID
 - c. Click the **Get an Adobe ID** link
 - d. You can then use the software for 30 days.



- 2) All users will need to **book a time** to see the ICT Department in the Library to fully activate Adobe Creative Cloud