

# INSTALLING CREATIVE CLOUD

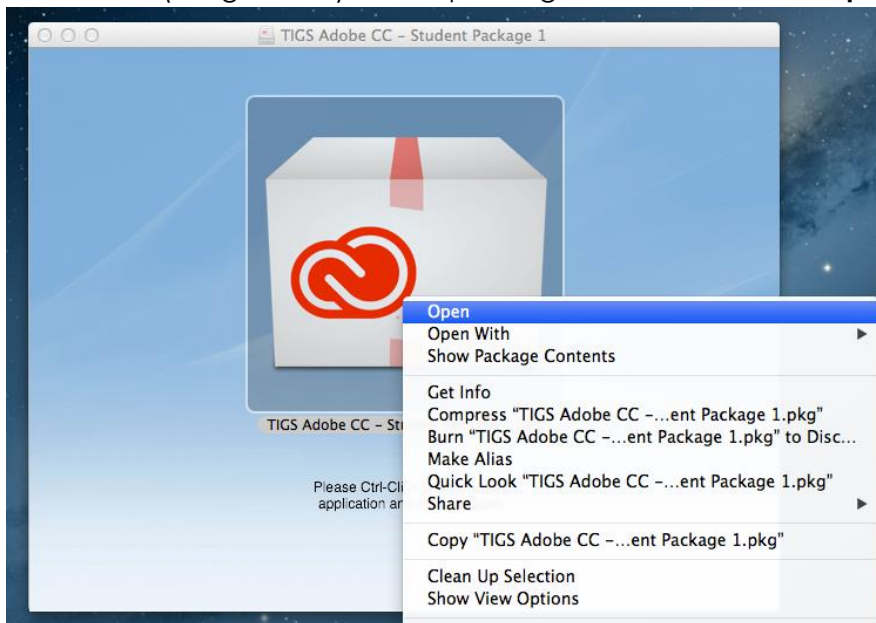
This guide will demonstrate how to install Adobe Creative Cloud.

## Troubleshooting

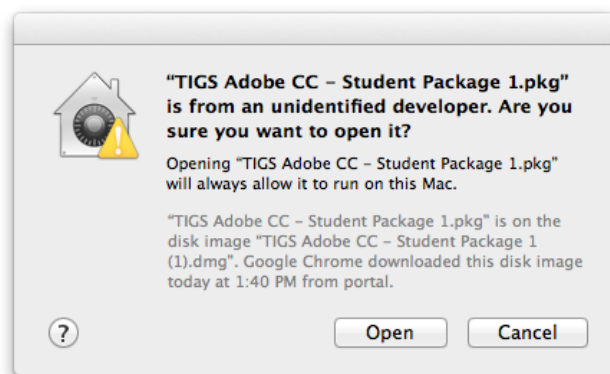
- Make sure you have enough space on your computer for the installer and the software once it is installed. You will need at least 10GB available
- If you have trouble installing, please contact the ICT Department from the Library front desk.

## Apple Mac

- 1) Open the **TIGS Adobe CC – Student Package x.dmg** file that you have downloaded from the TIGS Portal
- 2) **Cmd-Click** (or right click) on the package icon and choose **Open**

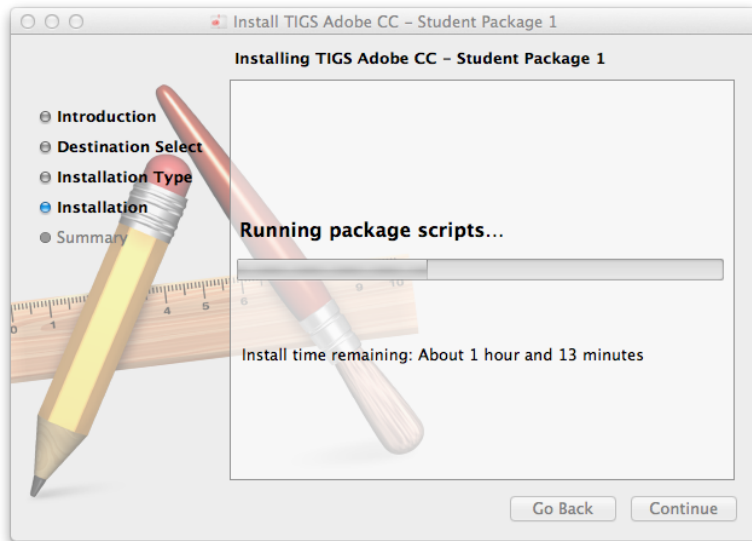


- 3) In the box that appears please click **Open**



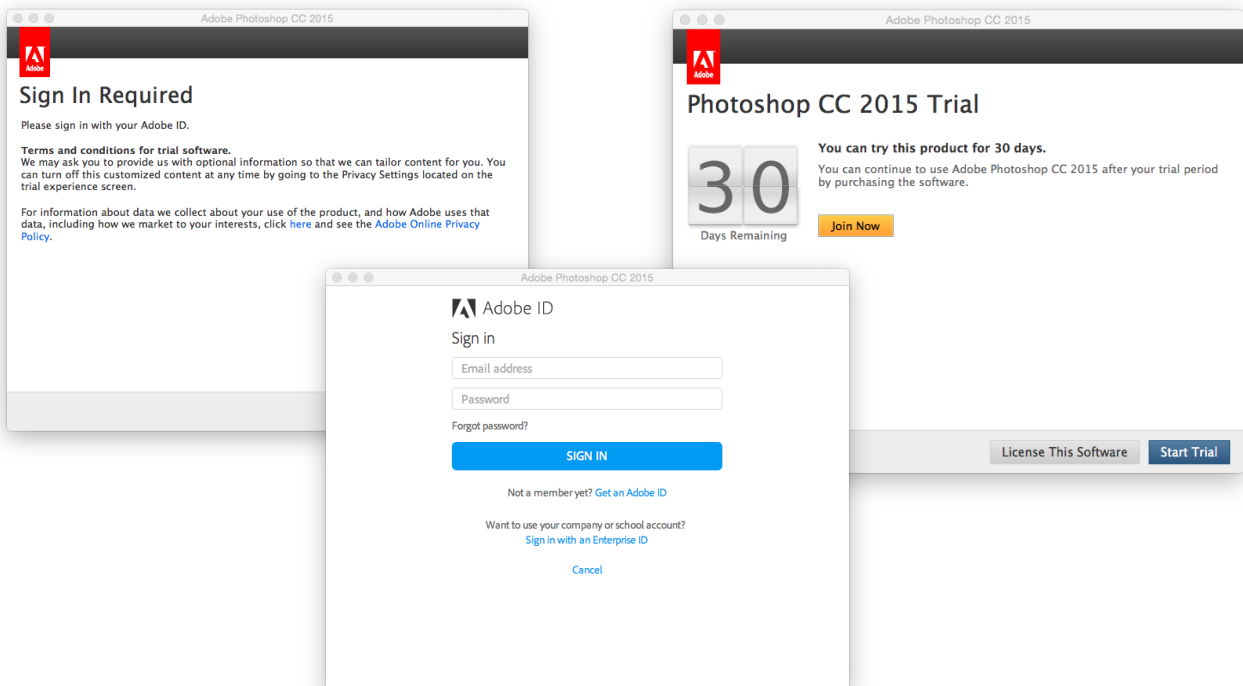
# INSTALLING CREATIVE CLOUD

- 4) **Run the installer and choose install. The install can take a long time and might look like it has stalled so please be patient.**



## Activate

- 1) If you need to use Creative Cloud straight away you will need to sign in with an Adobe ID.
  - a. Open an Adobe CC product (e.g. Photoshop)
  - b. You will be asked to Sign in with an Adobe ID
  - c. Click the **Get an Adobe ID** link
  - d. You can then use the software for 30 days.



- 1) All users will need to **book a time** to see the ICT Department in the Library to fully activate Adobe Creative Cloud